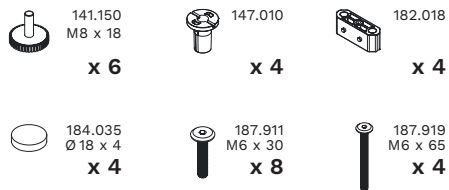
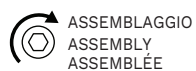
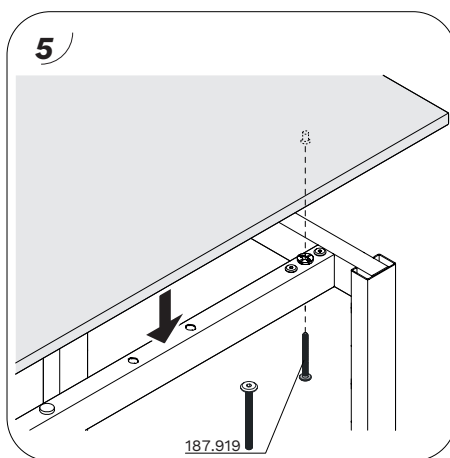
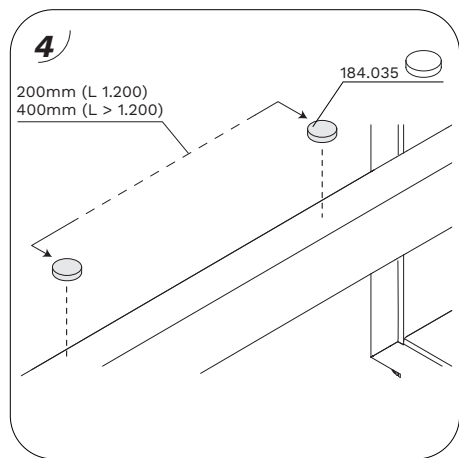
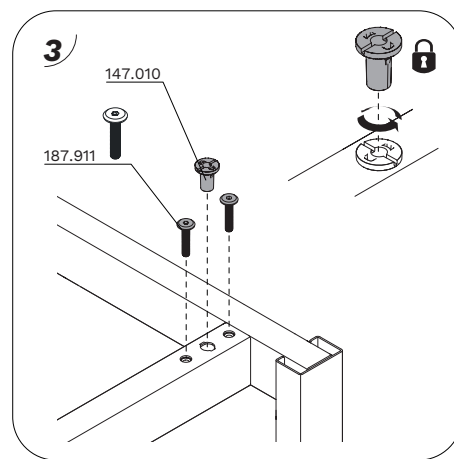
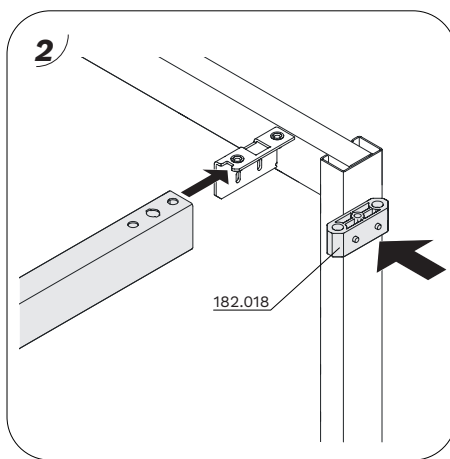
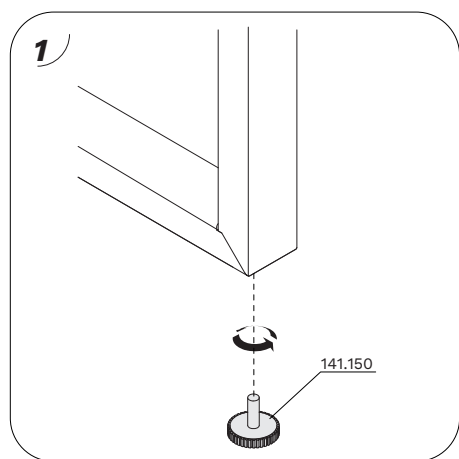
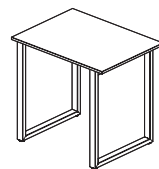


SCHEMA DI MONTAGGIO / DISASSEMBLAGGIO — ASSEMBLY / DISASSEMBLY INSTRUCTIONS — NOTICE DE MONTAGE / DÉMONTAGE

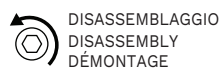


Allungo indipendente / Return top / Retour



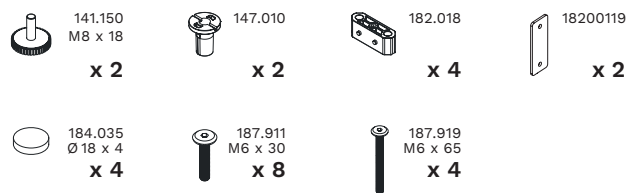
-Per disassemblare il prodotto seguire le istruzioni di assemblaggio a ritroso, invertendo il senso delle frecce.

-To disassemble the product, please follow the assembly instructions in the opposite order, reversing the arrows' direction.

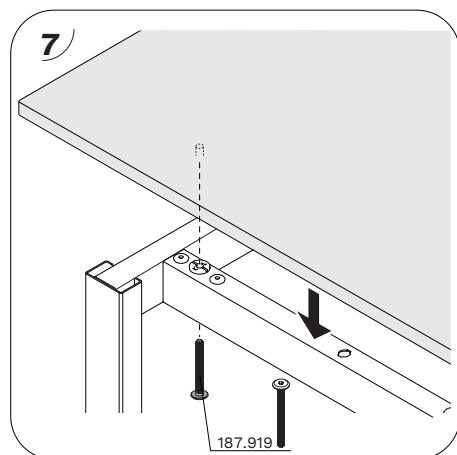
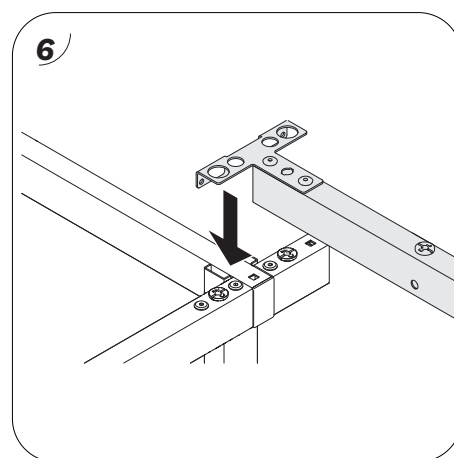
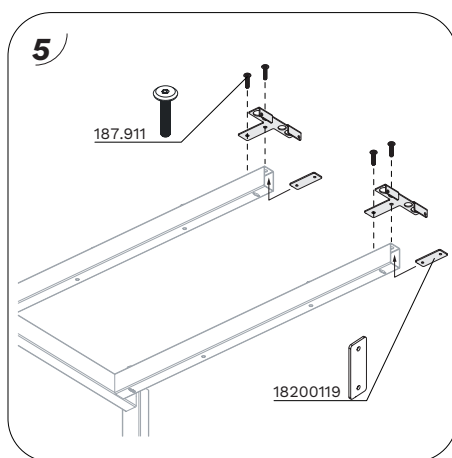
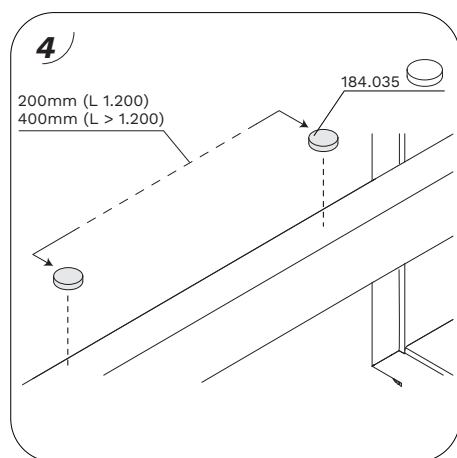
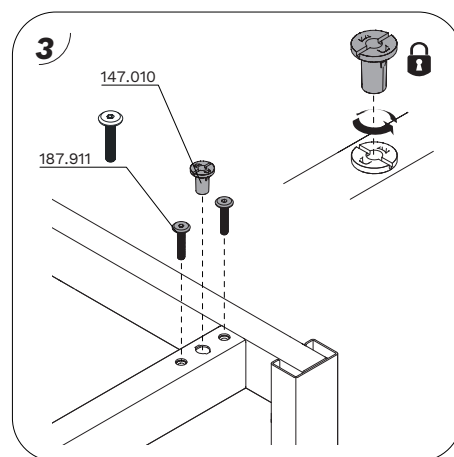
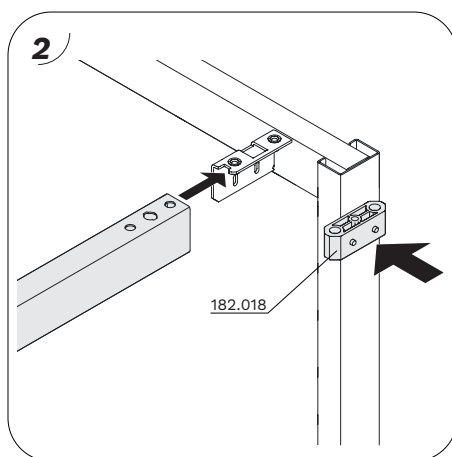
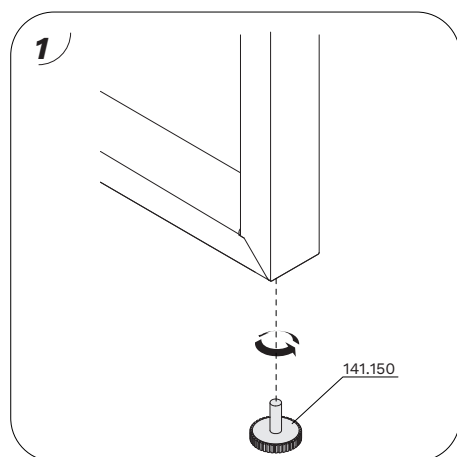
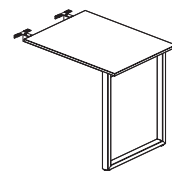


-Pour démonter le produit, suivez les instructions de montage en sens inverse, en inversant le sens des flèches.

SCHEMA DI MONTAGGIO / DISASSEMBLAGGIO — ASSEMBLY / DISASSEMBLY INSTRUCTIONS — NOTICE DE MONTAGE / DÉMONTAGE



Allungo indipendente / Return top / Retour



ASSEMBLAGGIO
ASSEMBLY
ASSEMBLÉE

-Per disassemblare il prodotto seguire le istruzioni di assemblaggio a ritroso, invertendo il senso delle frecce.



DISASSEMBLAGGIO
DISASSEMBLY
DÉMONTAGE

-To disassemble the product, please follow the assembly instructions in the opposite order, reversing the arrows' direction.

-Pour démonter le produit, suivez les instructions de montage en sens inverse, en inversant le sens des flèches.